

Boat Register/Measurement Form

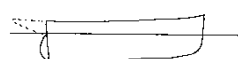
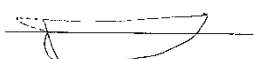
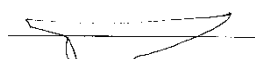
Please fill in as many of the items below as you can. The information you provide will be included in the OGA Boat Archive which is an important part of our Maritime Heritage and a unique record of the development of sailing vessels. Extracts from the information will be used in Rally programmes and published on the Web. If you intend to enter races organised by the OGA you must complete the shaded items so that we can calculate your T(H)CF handicap rating. Please return the form and any additional information and photographs to: Peter Crook, The Banks, Belle Hill, Kingsbridge TQ7 1NJ or as an email attachment to peter@peternelspeth.uk.

Measurement Units: Feet and inches: ☐ Feet and decimals: ☐ Metres: ☐

Boat's Name	Boat's OGA Number:	Year Built:	Owned Since
-------------	--------------------	-------------	-------------

Type (yacht, dayboat, fishing boat etc.)	Class/Design
--	--------------

Hull Shape (tick one):


☐

☐

☐

☐

Centre/daggerboard: ☐

Leeboards: ☐

Weighted drop keel: ☐

LOA	LOS	LWL	Beam	Draft	Draft c/b down
-----	-----	-----	------	-------	----------------

LOA is hull length excluding spars and rudder, LOS is length over spars, LWL excludes the rudder and Beam is the widest part of the hull (outside measurement) excluding rubbing strakes and other appendages.

Mainsail Type: Gaff: ☐ Gunter: ☐ Lug: ☐ Sprit: ☐ Lateen: ☐ Bermudan: ☐

Rig Layout: Sloop: ☐ Cutter: ☐ Yawl: ☐ Ketch: ☐ Schooner: ☐ Sail Area: sq.ft/m.

Hull Colour	Sail Colour
-------------	-------------

Sail No	Racing Flag
---------	-------------

Construction type (e.g. carvel) and materials

Designer	Based on design from (year)	Details
----------	-----------------------------	---------

Builder	Where Built
---------	-------------

First engine installed (year)	Current engine make and model	Fuel	Power
-------------------------------	-------------------------------	------	-------

Propeller(s): Number: Fixed: ☐ Folding: ☐ Centreline: ☐ Wing: ☐ No. of blades:

Register No	Date	Port
-------------	------	------

SSR No	Fishing No	Home Port
--------	------------	-----------

Previous Names (with dates if known):

Previous Owners (with dates if known):
--

Please sign the Declaration on Page 2.